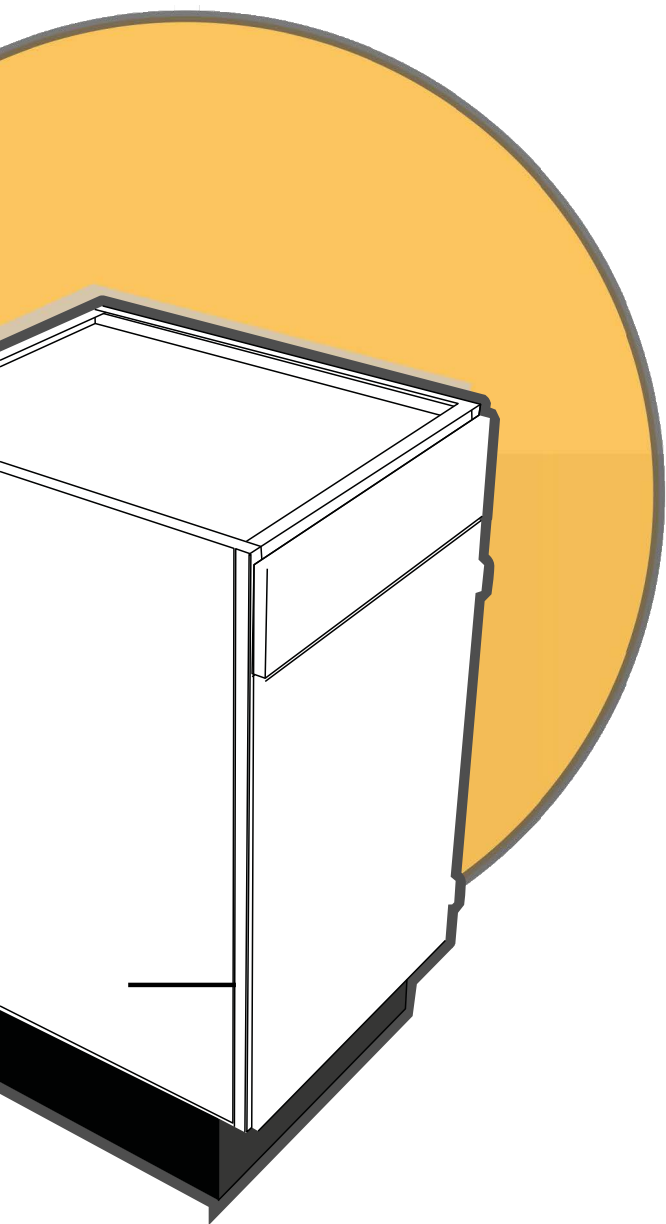


# steelsolutions

USA



concept to completion



# product description

---

Crafted to endure demanding laboratory settings, Steel Solutions' steel laboratory casework sets the benchmark for durability and resilience. Our cabinets are designed for seamless integration into fixed installations or as components of mobile, suspended, or flexible systems. With a diverse range of door and drawer configurations, along with a wide selection of options, colors, and finishes, we offer versatile layout choices that optimize storage efficiency in your laboratory.

Steel Solutions' steel casework is engineered to meet rigorous specifications, ensuring it meets the highest standards. Our commitment to quality guarantees the dependable, long-lasting performance of your laboratory furniture.

While we manufacture our standard cabinets as outlined below, we recognize that modern laboratories often require customization. To address your unique needs, we offer bespoke design and manufacturing services tailored to your exact requirements. Simply reach out to us with your specifications.

## **STEEL SOLUTIONS USA**

735 Florence Rd.

Savannah, TN, 38372

P: (731) 925-2200

[customerservice@steelsolutions.net](mailto:customerservice@steelsolutions.net)

Published June 2024

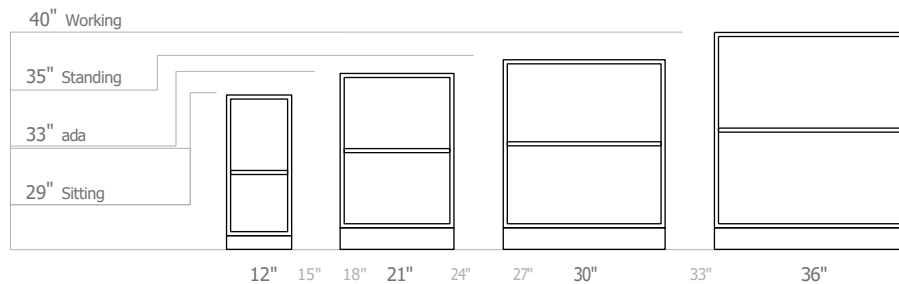
(C) 2024 Savannah Industrial Solutions.

All rights reserved.

## ■ **standards catalog**

base cabinets .....	4
sink cabinets .....	7
wall cabinets .....	8
tall cabinets .....	9
solution walls .....	10
applying finishes to cabinets.....	14

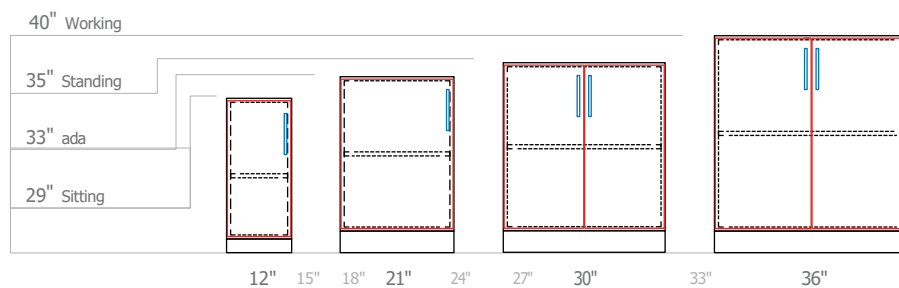
# base cabinets



**Standard Sizes**

W = 12" - 36"  
 H = 29, 33, 35, 40"  
 D = 21, 24, 29"

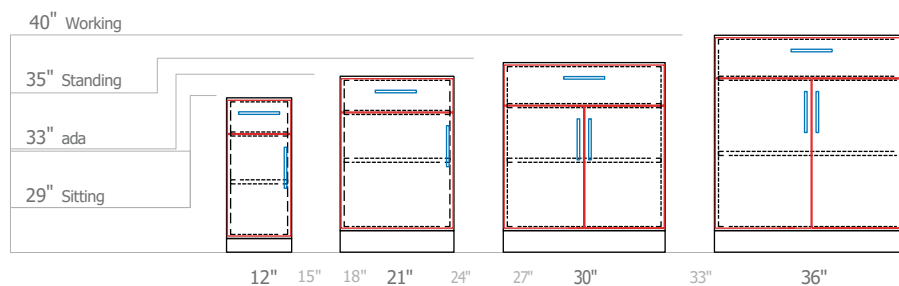
No doors, open slots,  
 fixed base cabinet



**Standard Sizes**

W = 12" - 36"  
 H = 29, 33, 35, 40"  
 D = 21, 24, 29"

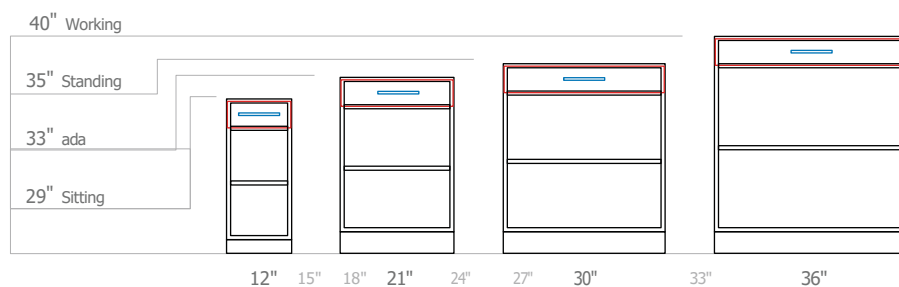
One set of doors,  
 fixed base cabinet



**Standard Sizes**

W = 12" - 36"  
 H = 29, 33, 35, 40"  
 D = 21, 24, 29"

One set of doors, one  
 drawer, fixed base  
 cabinet

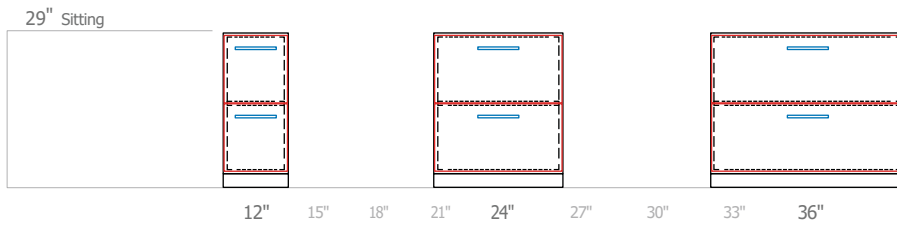


**Standard Sizes**

W = 12" - 36"  
 H = 29, 33, 35, 40"  
 D = 21, 24, 29"

No doors, one drawer,  
 open slots, fixed base  
 cabinet

# base cabinets



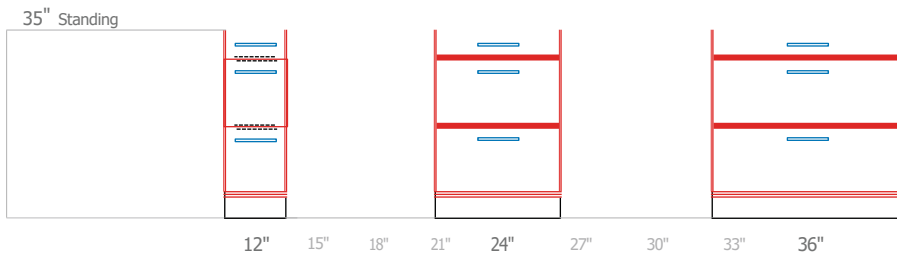
## Standard Sizes

W = 12" - 36"

H = 29"

D = 21, 24, 30"

No doors, two file drawers, fixed base cabinet



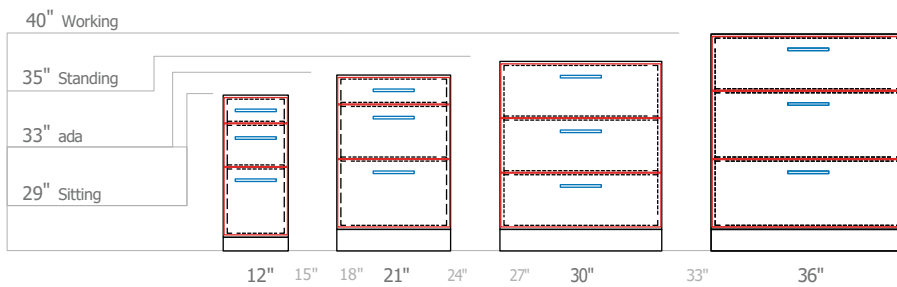
## Standard Sizes

W = 12" - 36"

H = 35"

D = 21, 24, 29"

No doors, one personal, two file drawers, fixed file cabinet



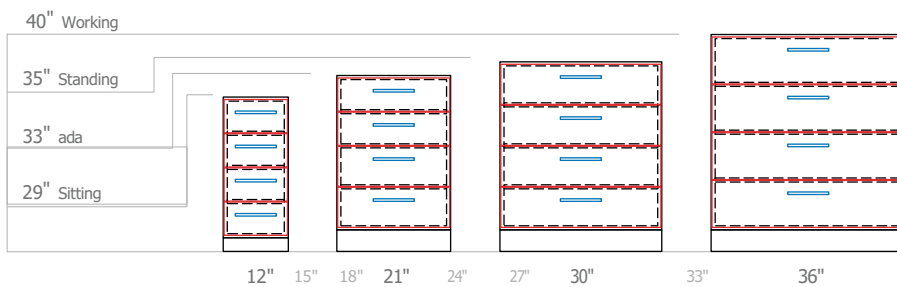
## Standard Sizes

W = 12" - 36"

H = 29, 33, 35, 40"

D = 21, 24, 29"

No doors, mixed drawers, fixed base cabinet



## Standard Sizes

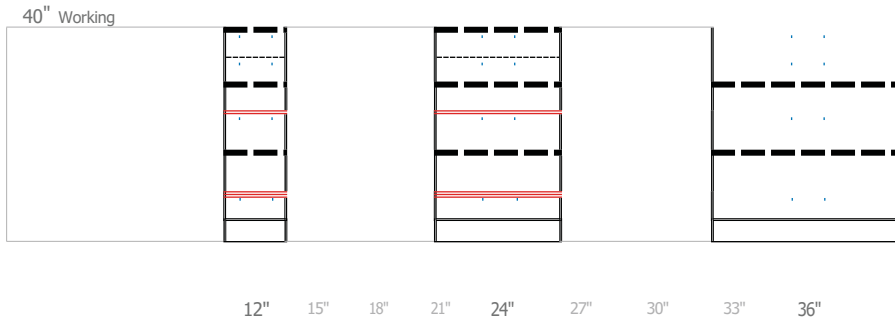
W = 12" - 36"

H = 29, 33, 35, 40"

D = 21, 24, 29"

No doors, four drawers, fixed base cabinet

# base cabinets



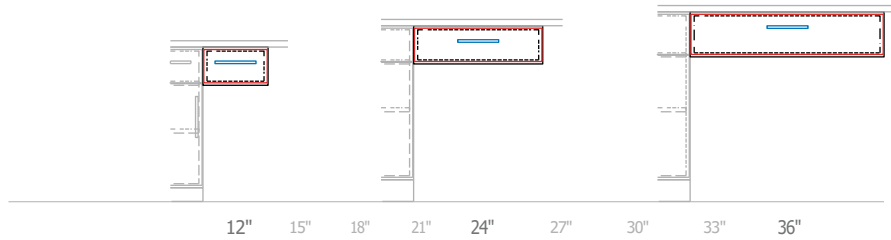
## Standard Sizes

W = 12" - 36"

H = 40"

D = 24, 29"

No doors, four  
drawers, fixed base  
gravity drawer cabinet



## Standard Sizes

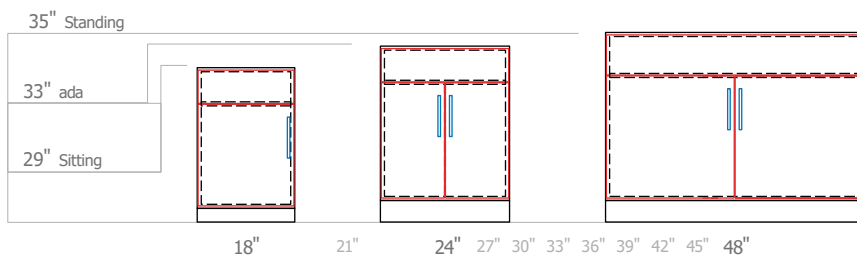
W = 12" - 36"

H = 6"

D = 21, 24, 29"

Suspended base  
cabinet

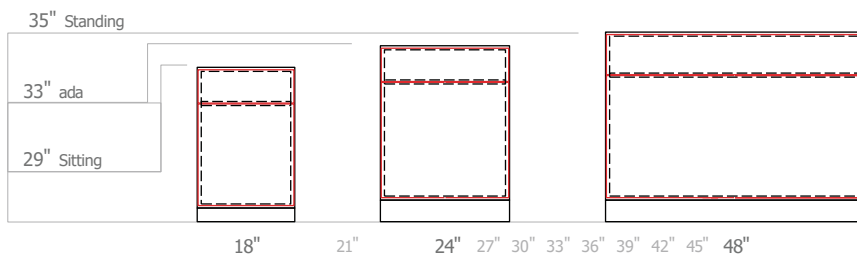
# sink cabinets



### Standard Sizes

W = 18" - 48"  
H = 29, 33, 35"  
D = 21, 24, 29"

One set of doors,  
one false front,  
fixed sink cabinet

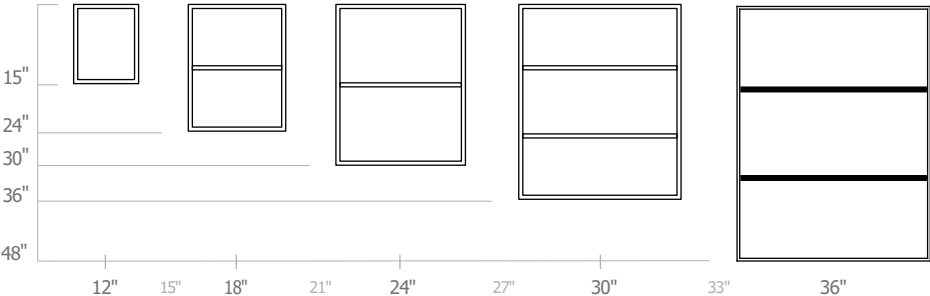


### Standard Sizes

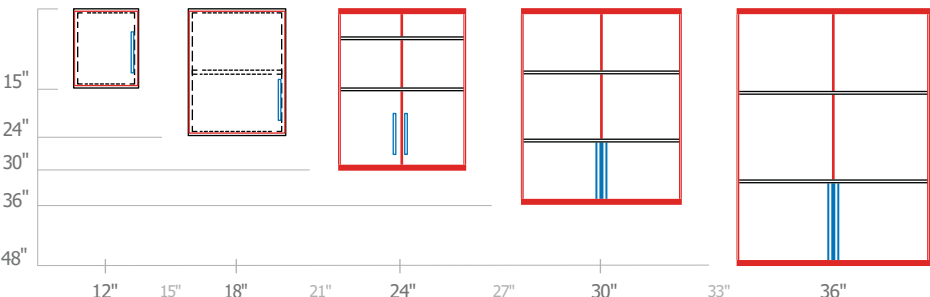
W = 18" - 48"  
H = 29, 33, 35"  
D = 21, 24, 29"

One removable  
panel, one false  
front, fixed sink  
panel

# wall cabinets



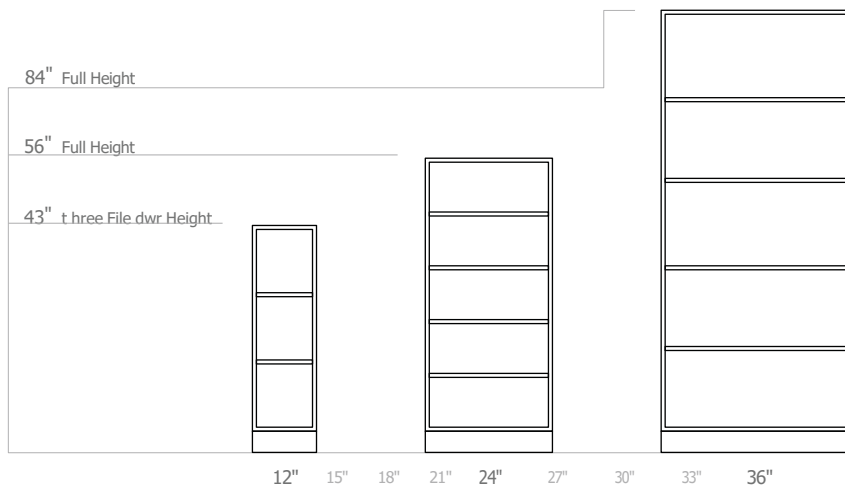
**Standard Sizes**  
 W = 12" - 36"  
 H = 15, 24, 30, 36, 48"  
 D = 12, 15, 21"  
 No doors, open, fixed  
 base cabinet



**Standard Sizes**  
 W = 12" - 36"  
 H = 15, 24, 30, 36, 48"  
 D = 12, 15, 21"  
 One set of doors, fixed  
 wall cabinet



# tall cabinets



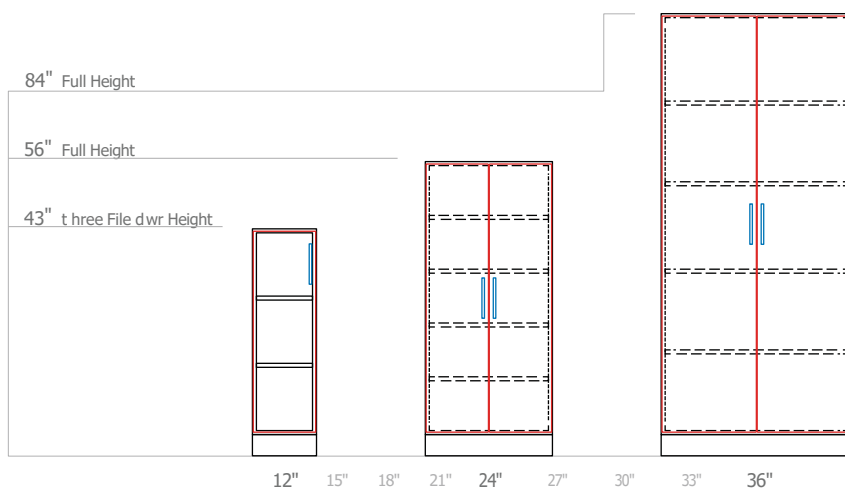
### Standard Sizes

W = 12" - 36"

H = 43, 56, 84"

D = 15, 21, 24"

No doors, open,  
fixed tall cabinet



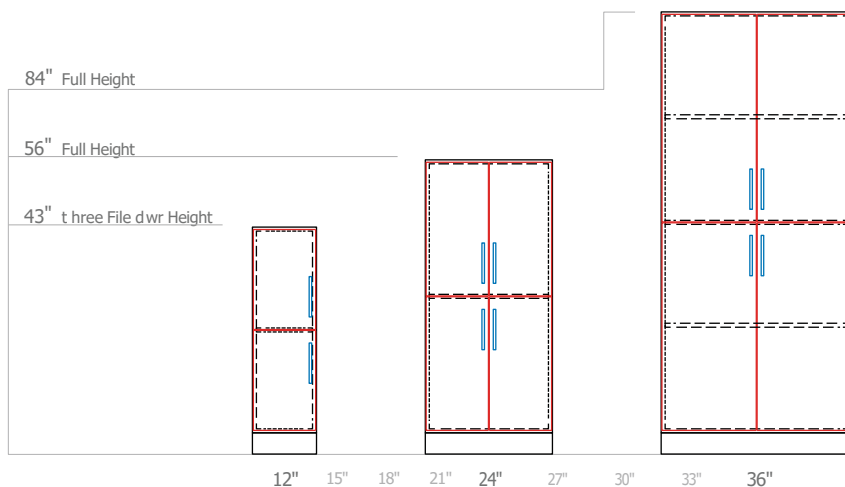
### Standard Sizes

W = 12" - 36"

H = 43, 56, 84"

D = 15, 21, 24"

One set of  
doors, fixed tall  
cabinet



### Standard Sizes

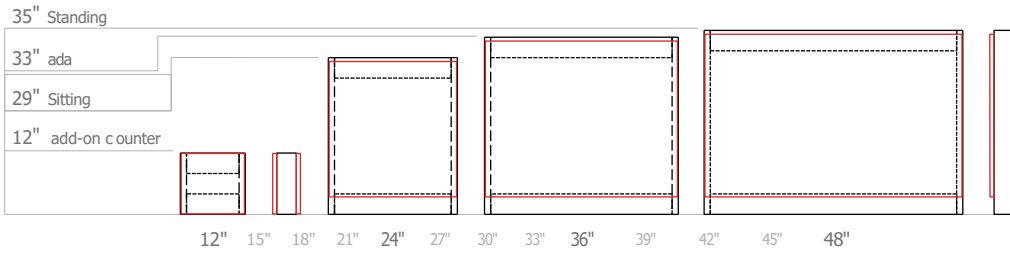
W = 12" - 36"

H = 43, 56, 84"

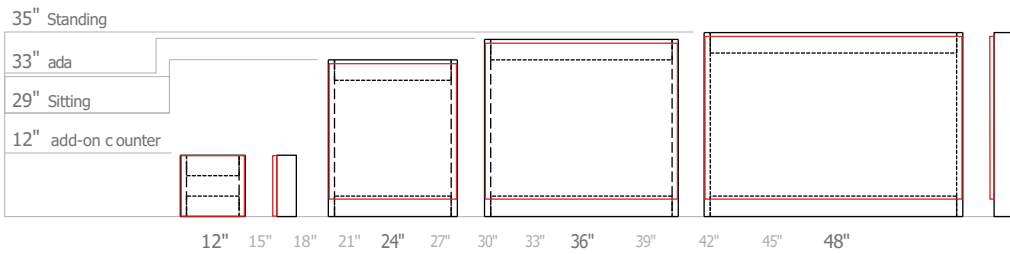
D = 15, 21, 24"

Two sets of  
doors, fixed tall  
cabinet

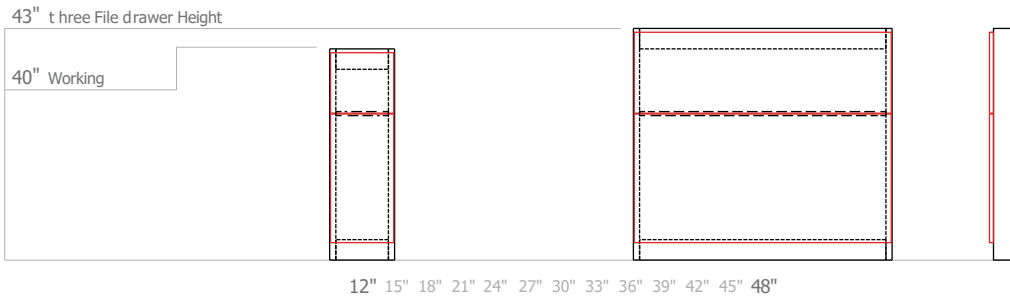
# solution walls



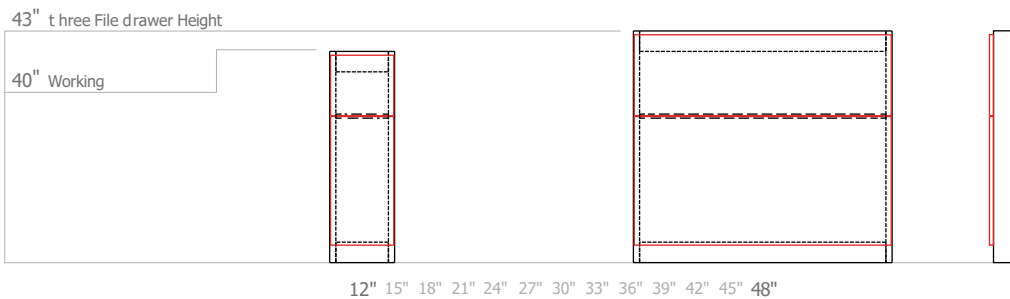
**Standard Sizes**  
 W = 12" - 48"  
 H = 12, 29, 33, 35"  
 D = 5"  
 One panel, double-sided solution wall



**Standard Sizes**  
 W = 12" - 48"  
 H = 12, 29, 33, 35"  
 D = 5"  
 One panel, single-sided solution wall



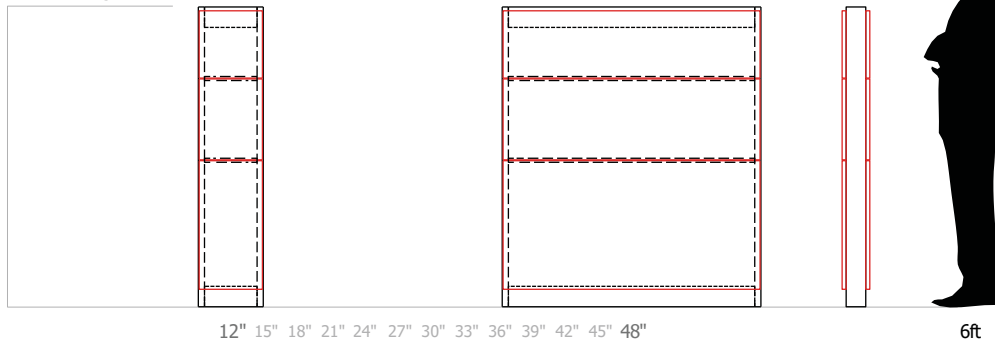
**Standard Sizes**  
 W = 12" - 48"  
 H = 40, 43"  
 D = 5"  
 Two panels, double-sided solution wall



**Standard Sizes**  
 W = 12" - 48"  
 H = 40, 43"  
 D = 5"  
 Two panels, single-sided solution wall

# solution walls

56" Full Height



## Standard Sizes

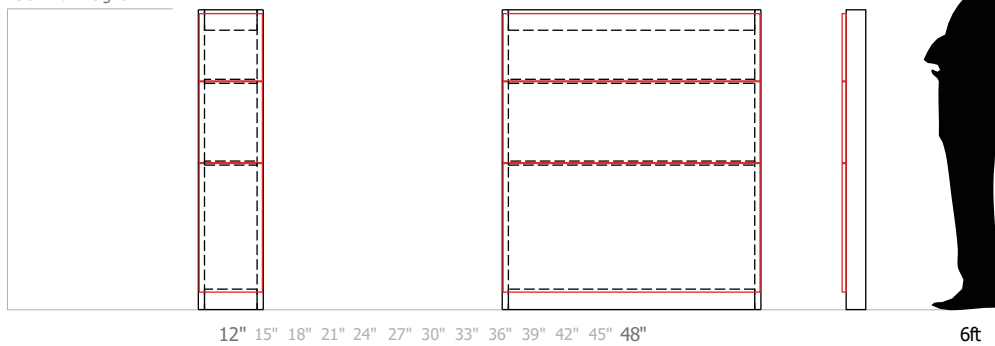
W = 12" - 48"

H = 56"

D = 5"

Three panels, double-sided solution wall

56" Full Height



## Standard Sizes

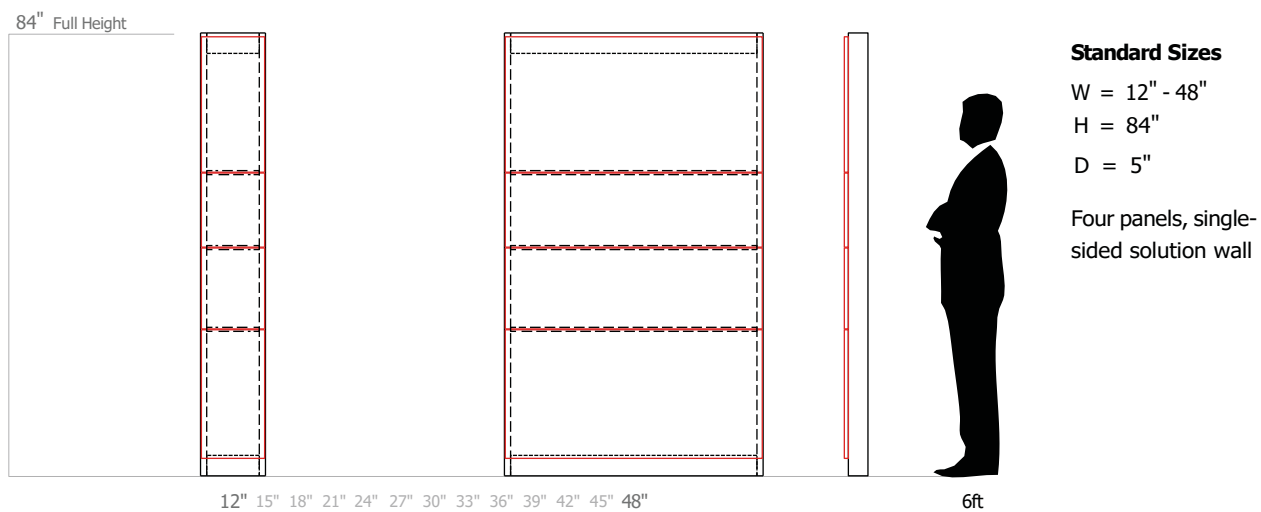
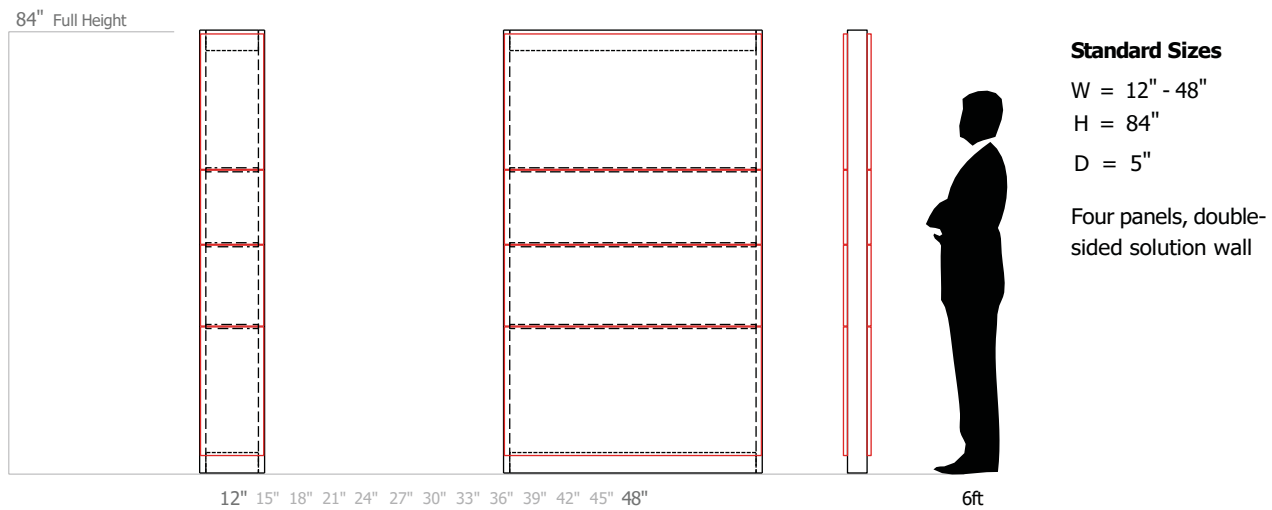
W = 12" - 48"

H = 56"

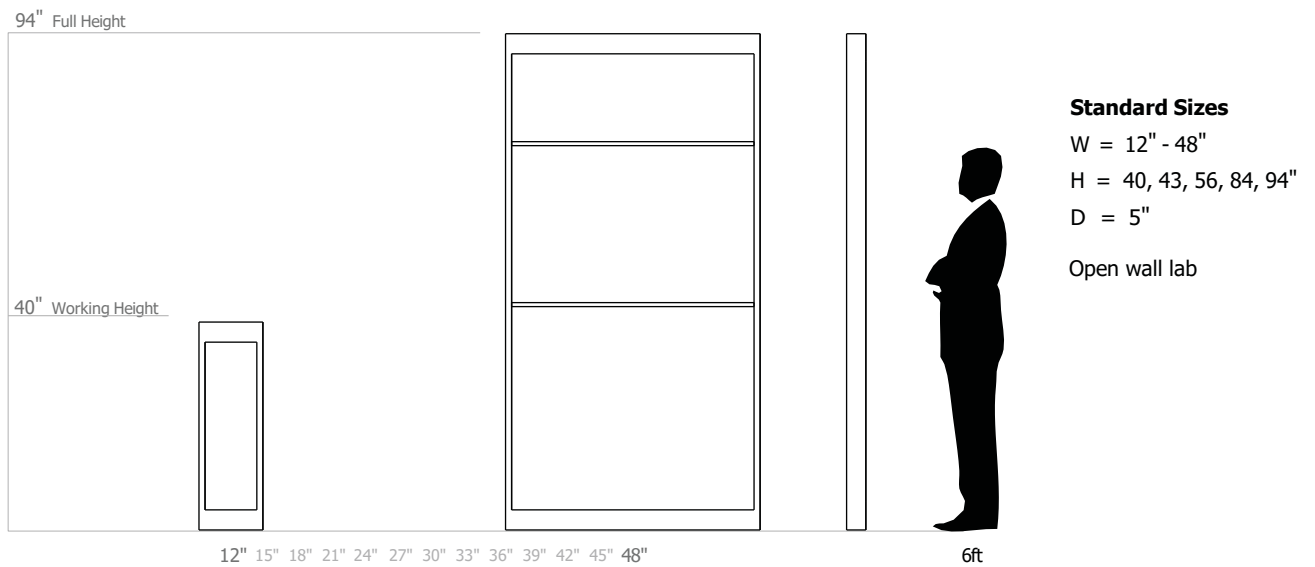
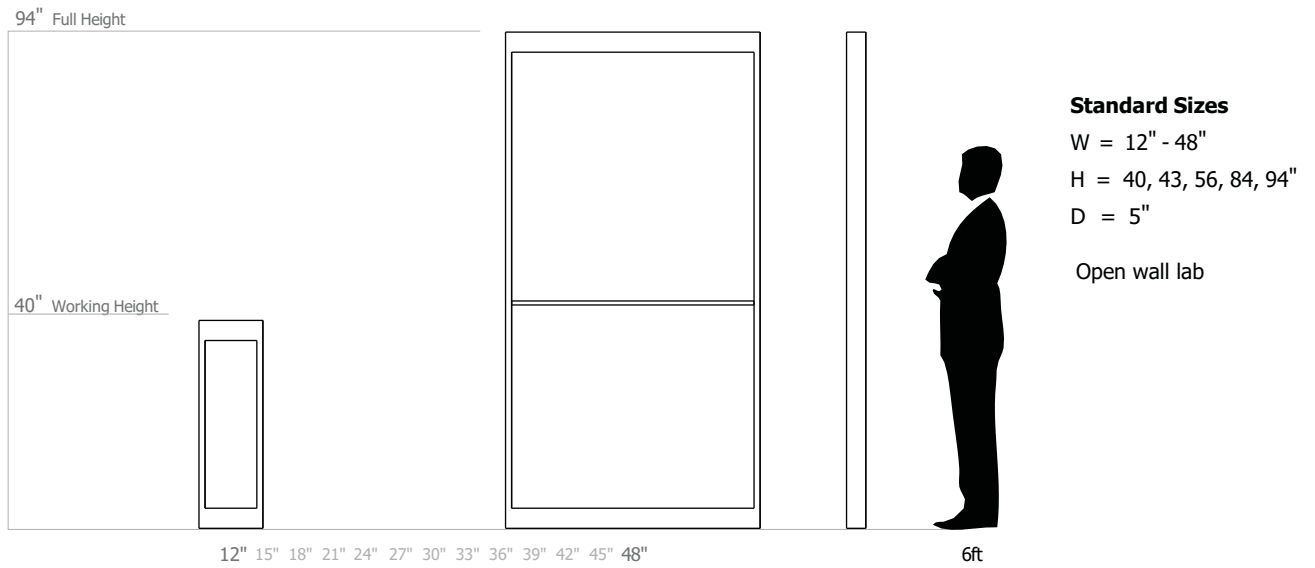
D = 5"

Three panels, single-sided solution wall

# solution walls



# solution walls



# applying finishes to cabinets

## Finishes

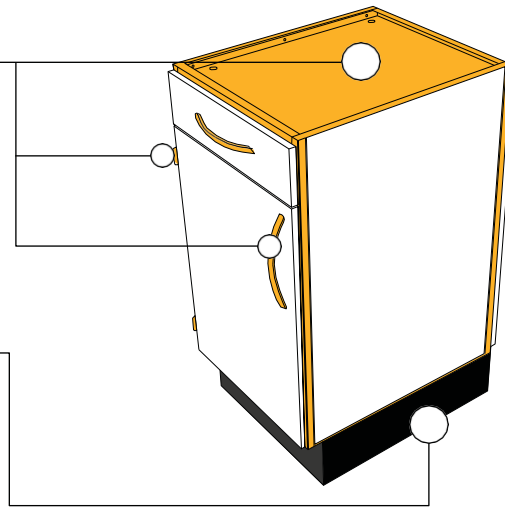
There are a few things to point out before you start applying finishes to your cabinets. The diagram below shows what finishes are available for specific parts of our cabinets.

### body & hardware finishes

- pc steel / black hardware
- pc steel / nickel hardware
- stainless steel / nickel hardware

### toekick finishes

- black pc steel
- stainless steel

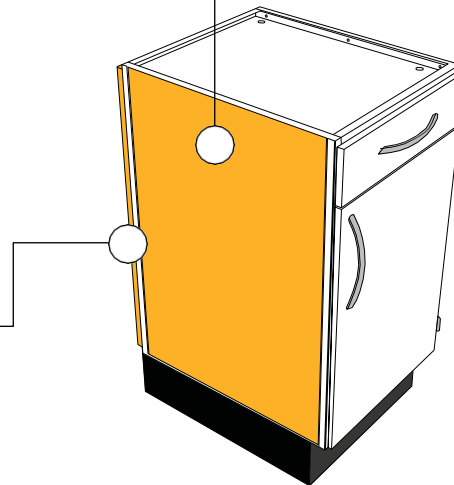


### inset finished end

- hpl
- pc steel
- stainless steel

### outside panel:

- hpl
- stainless steel
- pc steel



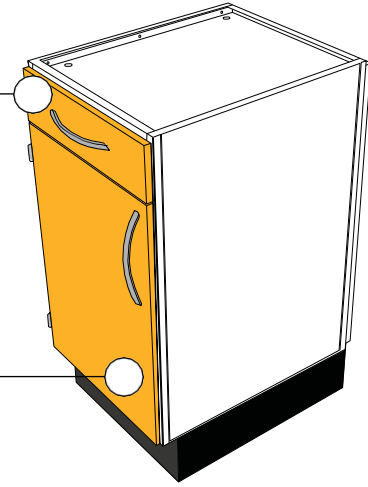
# applying finishes to cabinets

## drawer finishes:

- powder coated steel
- hpl

## door finishes:

- stainless steel
- hpl

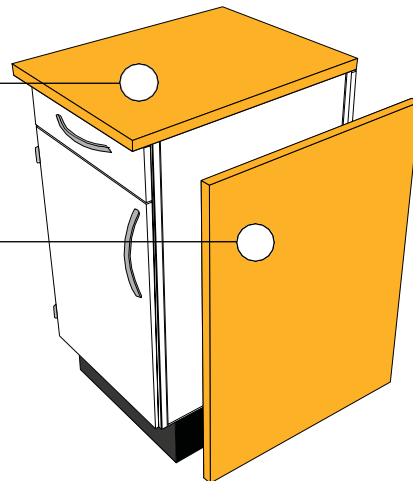


## worktop finishes:

- solid surface
- stainless steel
- hpl

## overlay finished end:

- hpl
- stainless steel
- pc steel





concept to completion

**STEEL SOLUTIONS USA**

735 Florence Rd.

Savannah, TN, 38372

P: (731) 925-2200

[customerservice@steelsolutions.net](mailto:customerservice@steelsolutions.net)

Published June 2024

(C) 2024 Savannah Industrial Solutions.

All rights reserved.

